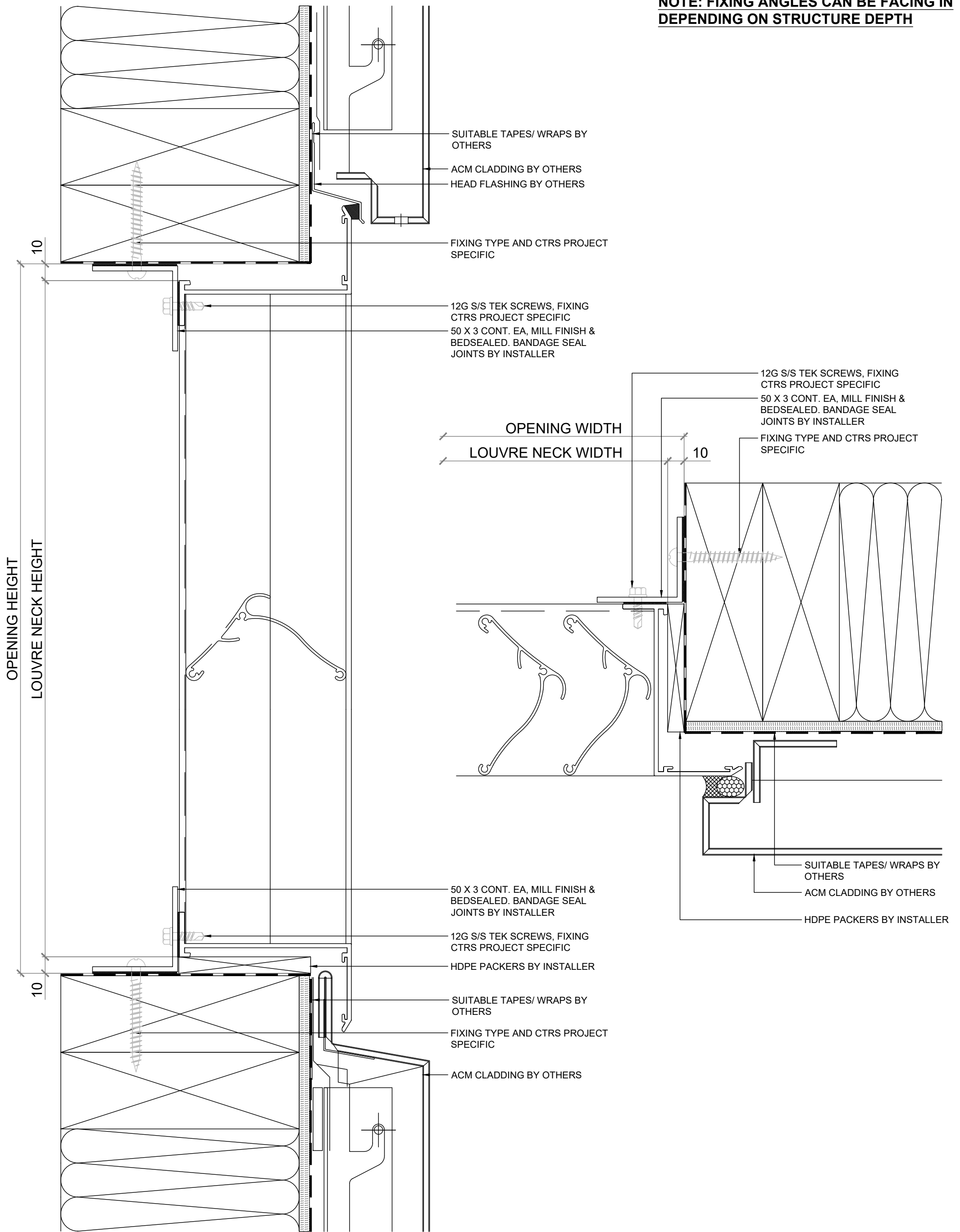


**NOTE: FIXING ANGLES CAN BE FACING IN  
DEPENDING ON STRUCTURE DEPTH**



## VENTILATION LOUVRE

## VL-VF2

## INSTALLATION DETAILS

### ACM CLADDING



E: sales@ventuer.co  
W: ventuer.co

**VENTÜER**  
Ventilation, Acoustic & Smoke Louvres

© 2019 All rights reserved

**SCALE: 1:2 @ A3 - 1:1 @ A4**

**DWG NO. VL-VF2-A.11**

**DATE: 15/01/2025**

REV  
1