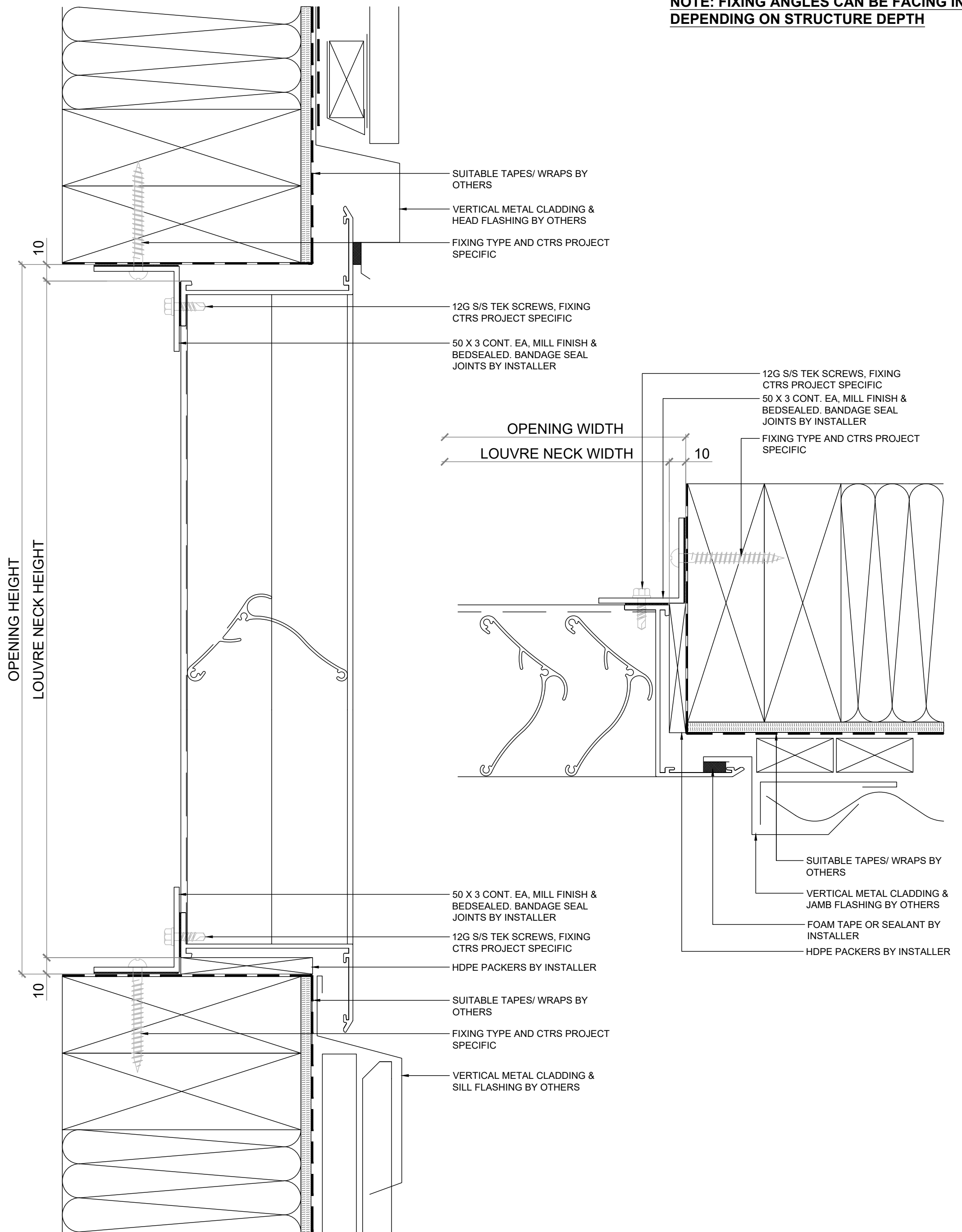


**NOTE: FIXING ANGLES CAN BE FACING IN
DEPENDING ON STRUCTURE DEPTH**



VENTILATION LOUVRE

VL-VF2

**INSTALLATION DETAILS
VERTICAL METAL CLADDING**



E: sales@ventuer.co
W: ventuer.co

VENTÜER
Ventilation, Acoustic & Smoke Louvres

© 2019 All rights reserved

SCALE: 1:2 @ A3 - 1:1 @ A4

DWG NO. VL-VF2-A.04

DATE: 15/01/2025

REV
1