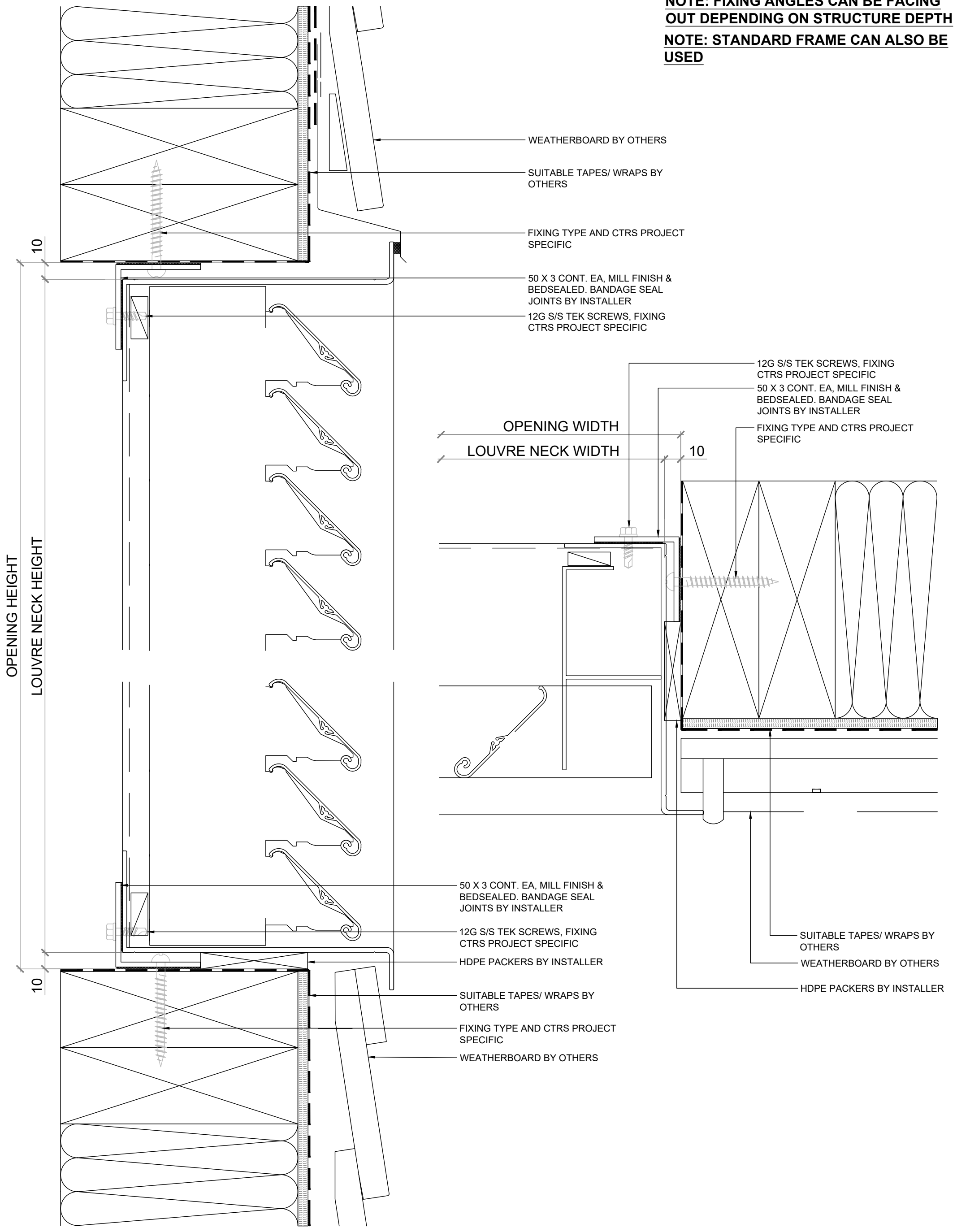


**NOTE: FIXING ANGLES CAN BE FACING OUT DEPENDING ON STRUCTURE DEPTH**  
**NOTE: STANDARD FRAME CAN ALSO BE USED**



**VENTILATION LOUVRE**

**VL-50CM**

**INSTALLATION DETAILS  
 WEATHER BOARD**



**VENTÜER**  
 Ventilation, Acoustic & Smoke Louvres

E: sales@ventuer.co  
 W: ventuer.co

© 2019 All rights reserved

**SCALE: 1:2 @ A3 - 1:1 @ A4**

**DWG NO. VL-50CM-A.10**

**DATE: 15/01/2025**

REV  
**1**