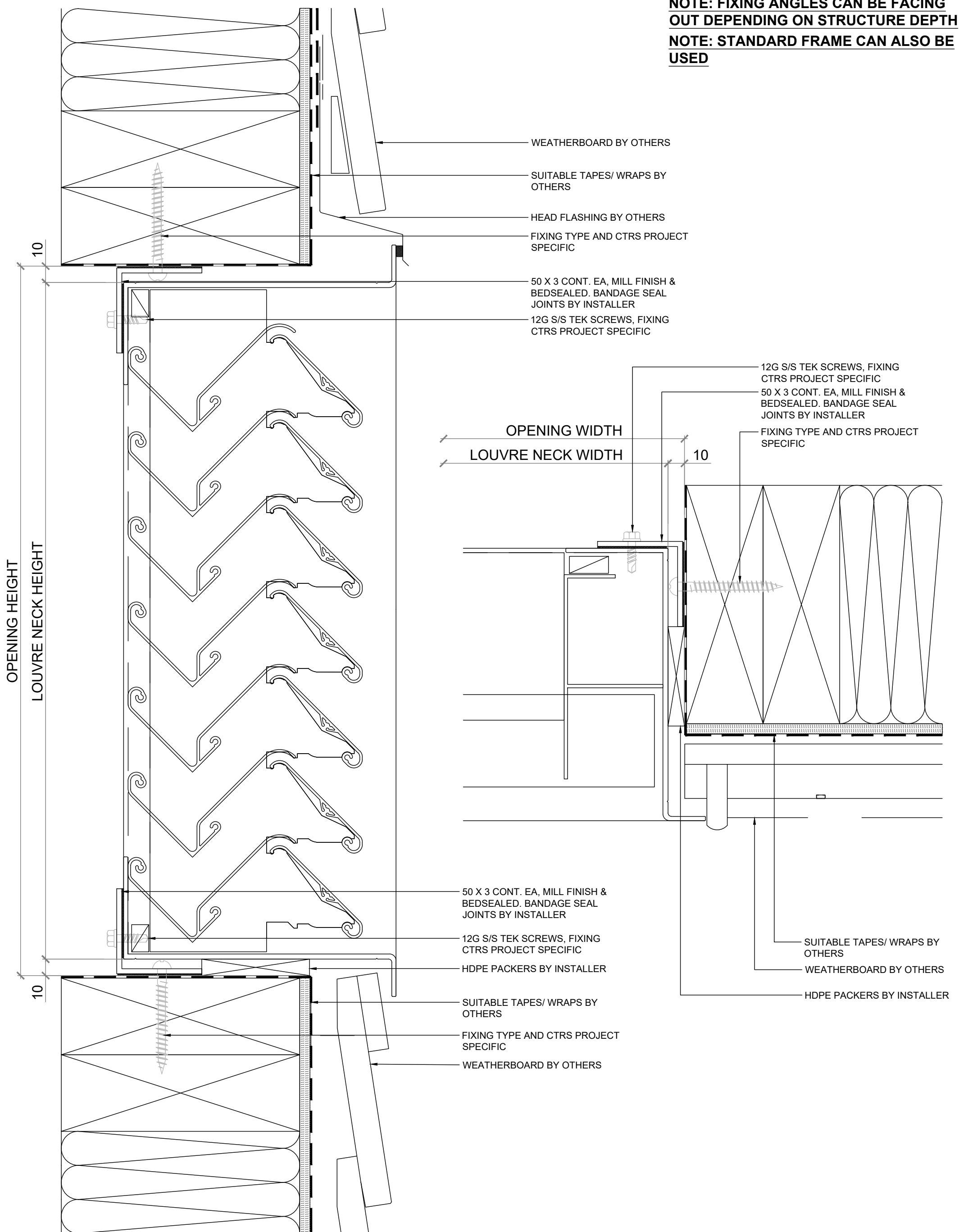


NOTE: FIXING ANGLES CAN BE FACING OUT DEPENDING ON STRUCTURE DEPTH
NOTE: STANDARD FRAME CAN ALSO BE USED



VENTILATION LOUVRE

VL-3SD

INSTALLATION DETAIL WEATHER BOARD



E: sales@ventuer.co
W: ventuer.co

VENTÜER

Ventilation, Acoustic & Smoke Louvres

© 2019 All rights reserved

SCALE: 1:2 @ A3 - 1:1 @ A4

DWG NO. VL-3SD-A.10

DATE: 15/01/2025

REV
1