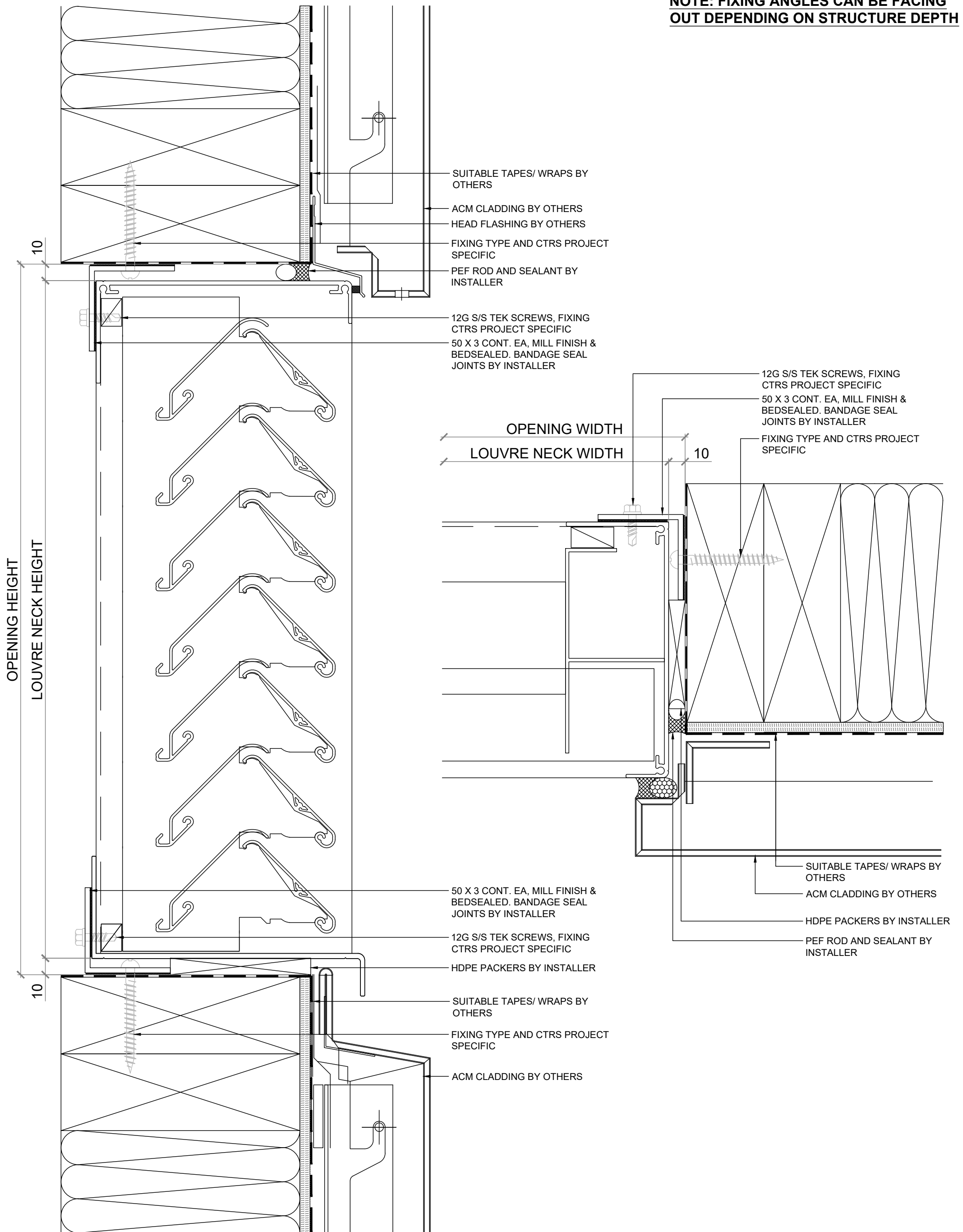


**NOTE: FIXING ANGLES CAN BE FACING OUT DEPENDING ON STRUCTURE DEPTH**



## VENTILATION LOUVRE

# VL-2SD

## INSTALLATION DETAIL ACM CLADDING



E: [sales@ventuer.co](mailto:sales@ventuer.co)  
W: [ventuer.co](http://ventuer.co)

# VENTÜER

Ventilation, Acoustic & Smoke Louvres

© 2019 All rights reserved

**SCALE: 1:2 @ A3 - 1:1 @ A4**

**DWG NO. VL-2SD-A.11**

**DATE: 15/01/2025**

REV  
1