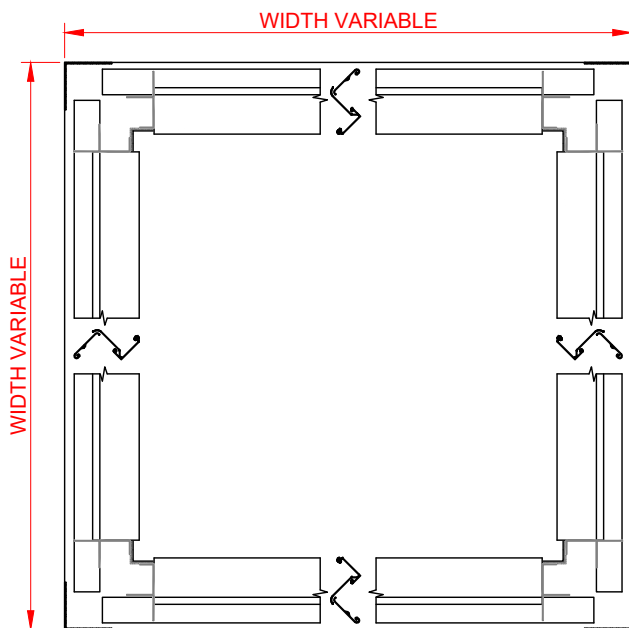
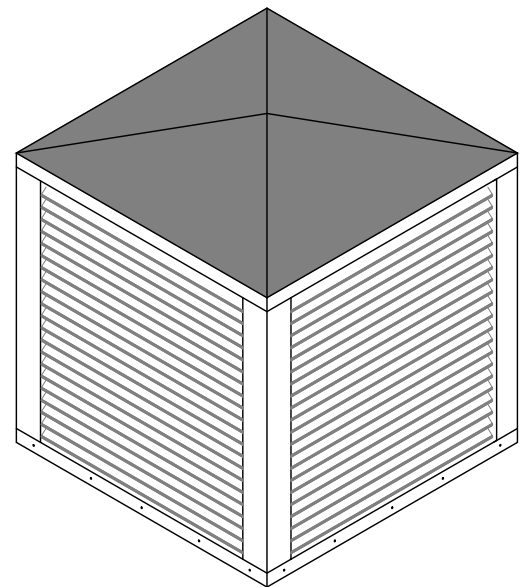


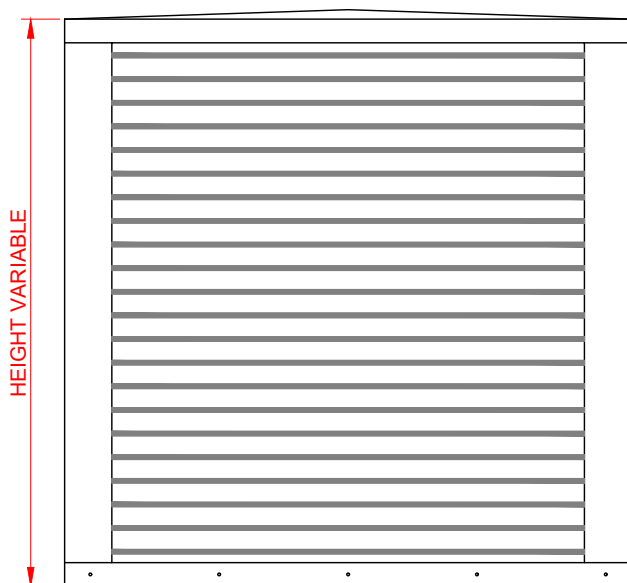
VENTÜER TECHNICAL DATA SHEET



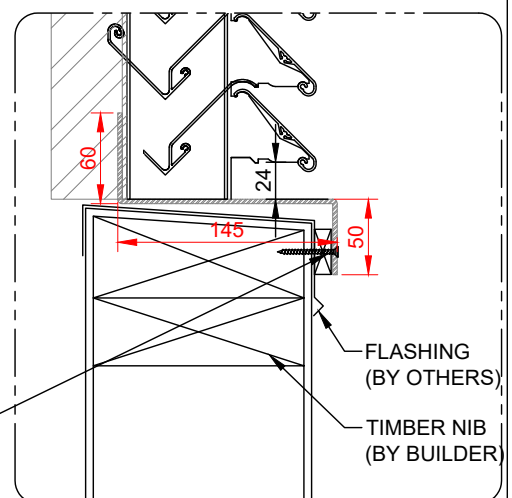
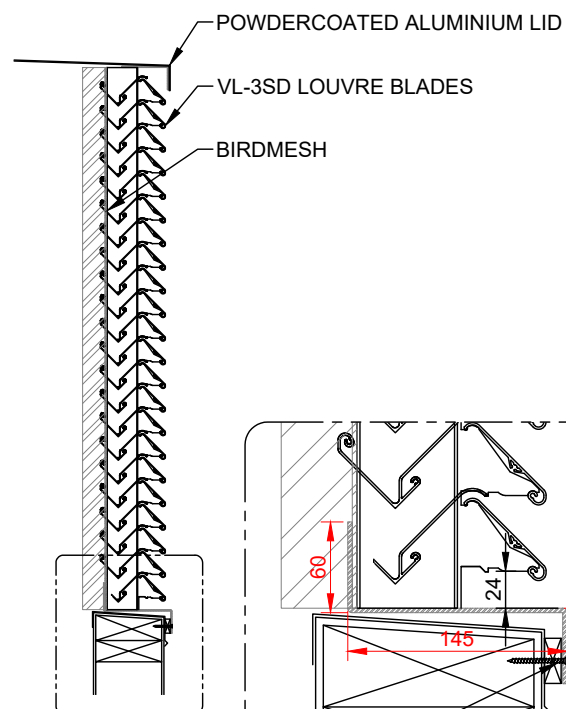
INTERNAL PLAN VIEW



ISOMETRIC



ELEVATION VIEW



PENTHOUSE FIXED THROUGH LOWER FLANGE OF STRUCTURAL ALUMINIUM FRAME INTO TIMBER FRAMING WITH S/S 14G TEK SCREWS AT 300MM CENTRES. ENSURE MINIMUM 5MM HPDE PACKER BETWEEN FRAME AND CAP FLASHING TO ENABLE CONDENSATION DRAINAGE.

PENTHOUSE LOUVRE

VL-3SD PENTHOUSE



VENTÜER
High-Performance Building Ventilation

P: +64 9 973 3616
W: ventuer.co.nz
© 2019 All rights reserved

Scale:

NTS

Date:

01/08/2023

VL-3SD PENTHOUSE

Ver.1